

Moshi IE300 Laser engraver user manual

1. Install Guide

2. Menu guide

3. Composing

4. Seal Layout

1. Install Guide

1, hardware environment: 64M memory and computer more than 586, hard disk more than 10M space, have engraving machine or the printer at least;

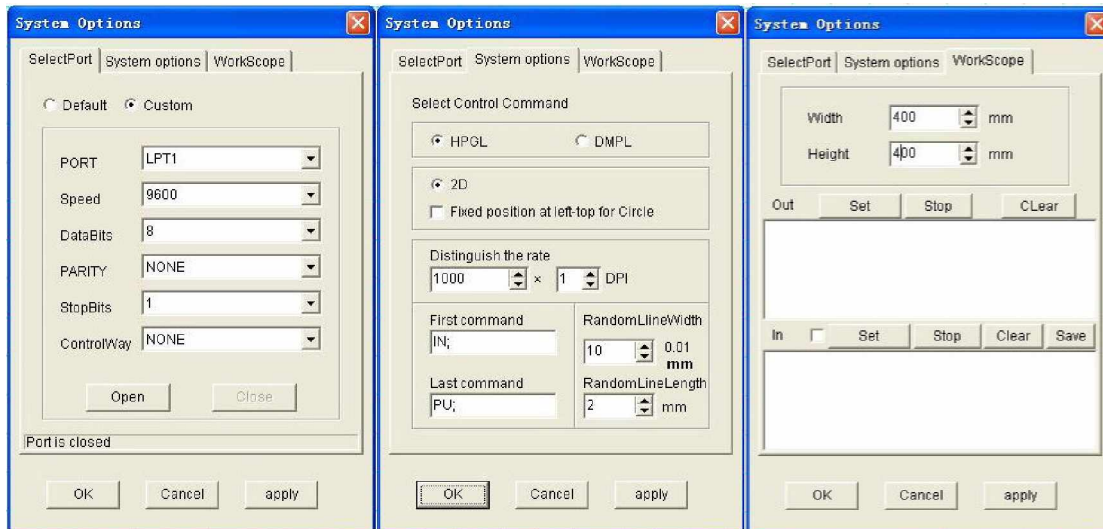
2, software environment: WINDOWS 95/98/ME/2000/XP

System Options:

1, Select Port: Set up the port linking with engraving machine

(1)Default: The Default port is LTP (Printer port). Address: 378H/IRO7

(Pls adjust the computer Parallel port at CMOS if not use 378H)



2, System options:

(1)Select control command:

a, engraving machine command -

HPGL (IE300 Laser engraving machine user, please choice this one);

b, Cutter Plotter - DMPL command select

(2)2D: flat engraving; 3D - engrave three-dimensionally;

(3)Resolution rate:

Engraver's resolution ratio: The resolution ratio must be equal with the engraving machine, otherwise, outputting size is not the stepped size;

(4)Command setting, to optimize engraving machines

a 、 First command: Engraving machine start command;

b 、 Finish command: Engraving machine stop command;

(5)Random line set up

a 、 Random line width: The width of the anti-counterfeit random line, calculate with mm. ;

b 、 Random line length: The length of the anti-counterfeit random line, calculate with mm. ;

3, Workscope

Width/Height: the range of output area of laser engraver.

Anti-counterfeit RandomLine

Add the randomline, can prevent the duplicating of the seal.

Method:

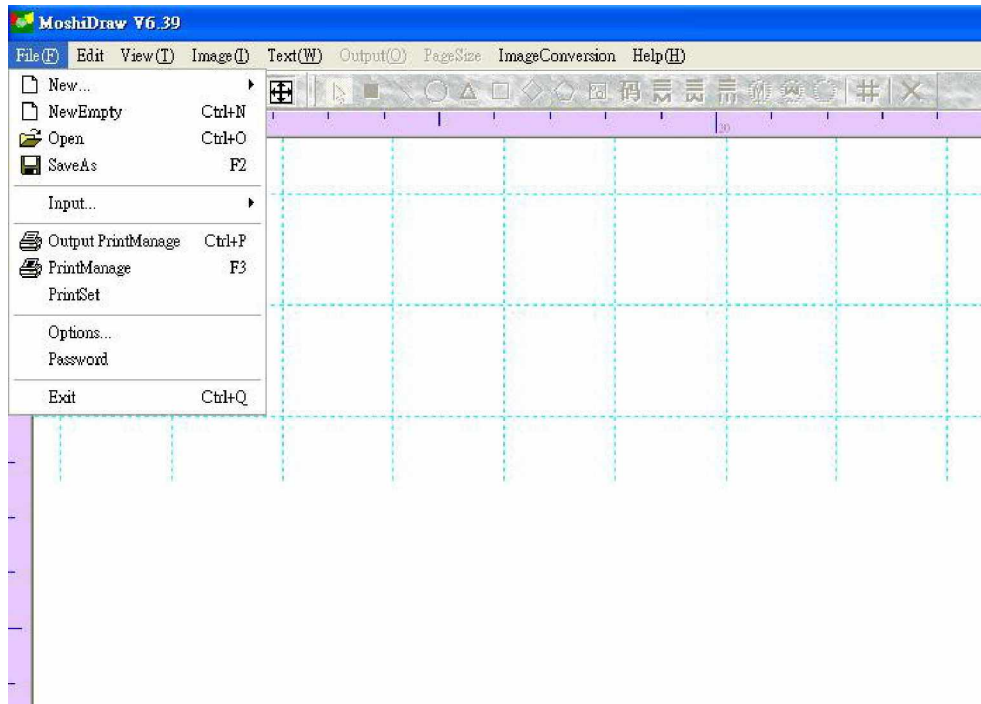
a)Compose and design the seal ;

b)Choose the Image – “ RandomLine” , The characters outline that changes appears on the seal , press any key or click the mouse, the randomline has been added;

c)Add the randomline again, repeat the second step to operate;

2. Menu

File



(1)New: to make a new seal such as square, rectangle, round and ellipse seal

(2)New empty: open a new plain working area

(3)Open: Open Moshi *.YZ;

(4)Save As: Save the files by *.YZ or .BMP .JPG/JPEG. file format.

(5)Input: Use the scanner to input the picture;

(6)Output print manage: (IE300 no use this function);

(7)Print manage: (IE300 no use this function);

(8)Print set: (IE300 no use this function);

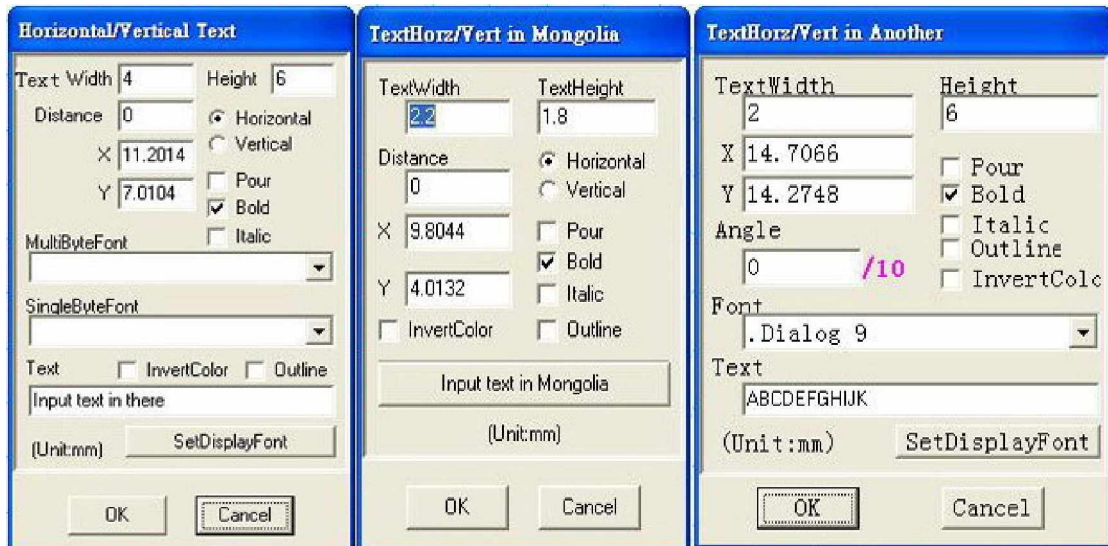
(9)Option: (system options)

(10)Password: Can prevent the use that is not authorized, please keep the password firmly in mind;

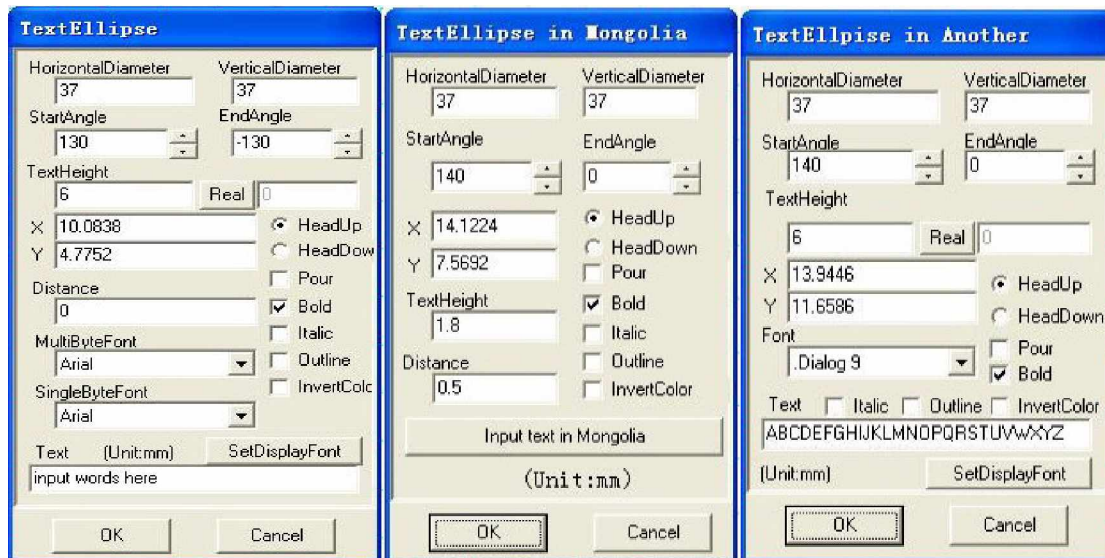
(11)Exit: Close the system.

Text

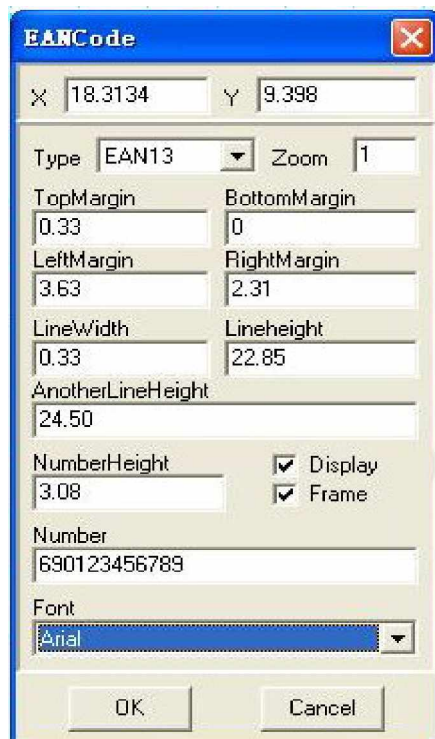
(1)Horizontal / Vertical Text: Click “Text” in the tool menu, click to choose the starting point with the mouse in the seal/pattern; Then, spring the set up window and set up the parameter and characters content, click to confirm that finishes adding the course;



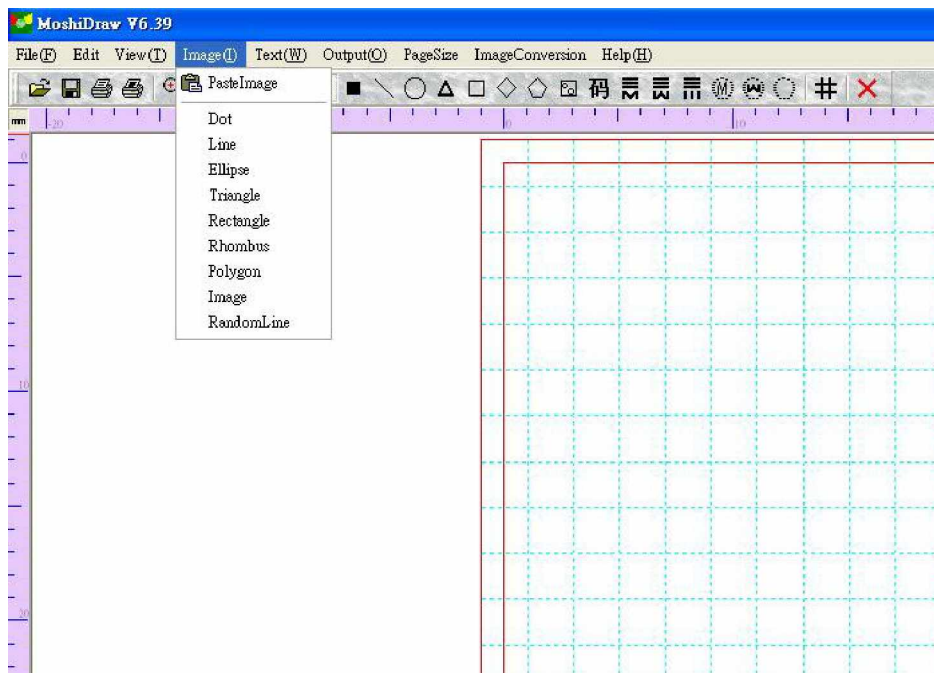
(2)Text Ellipse: Arrange the characters horizontally / vertically: After choosing in the menu / the tool column, click to choose the center with the mouse in the seal; Then, spring the set up window and set up the parameter and characters content, click to confirm that finishes adding the course;



(3) The bar code inputting, support EAN8/13 bar code



Image



(1)Paste Image: Import BMP,JPG,JPEG,WMF,EMF graphic files ;

(2)Drawing tool:

Dot: After choosing in tool menu, click and pull with the mouse in the seal, can draw the point of the corresponding size;

Line: The way of drawing is the same with point drawing;

Ellipse: The way of drawing is the same with point drawing;

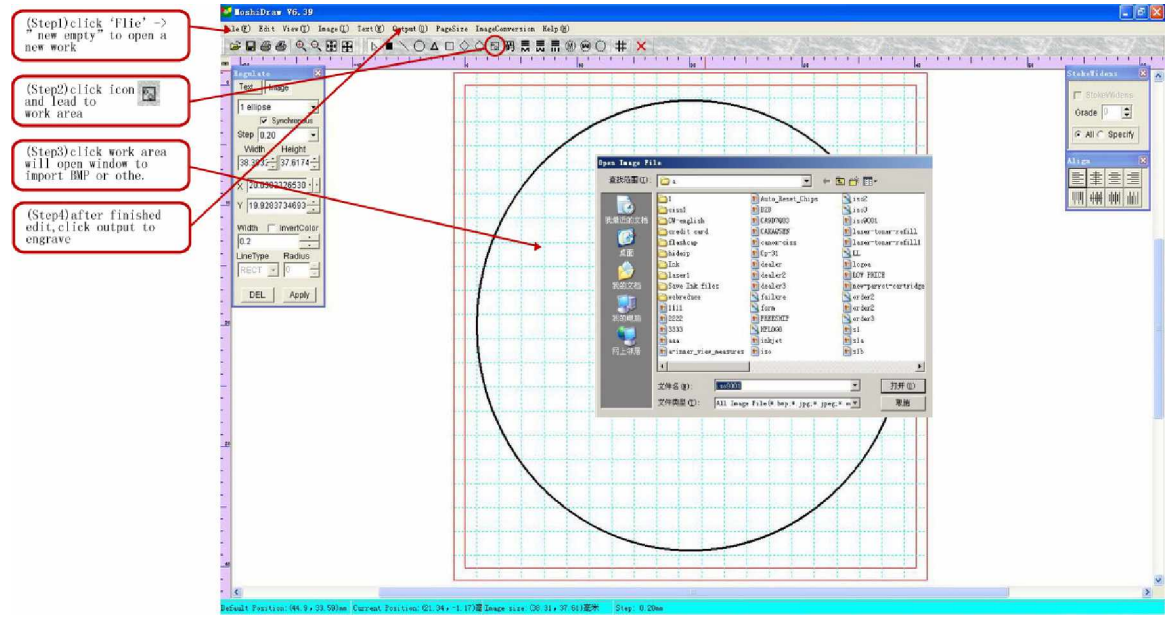
Rectangle: The way of drawing is the same with point drawing;

Rhombus: The way of drawing is the same with point drawing;

Polygon: The way of drawing is the same with point drawing;

Image: The way of import is the same with point drawing, just choose the picture file that will be added;

RandomLine: Adding the anti-counterfeit randomline.

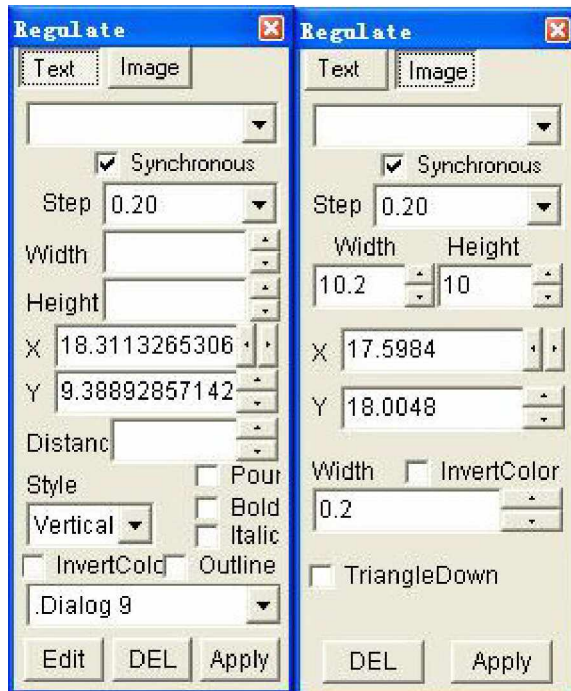


Tool

(1) **StokeWidens:** Add the thickness of characters;

ADD

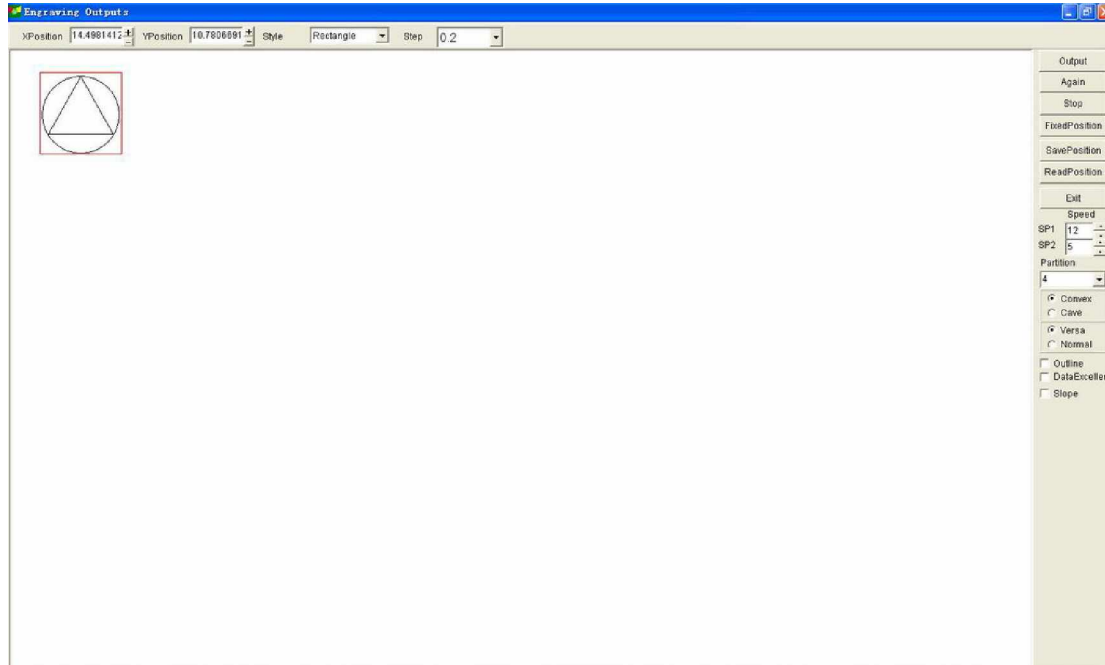
(2) **Regulate:** Edit the Text/Image parameters;



(3) **Align:** Adjust a lot of target, make its coordinate of the lefts / right / up /down /centre between two parties;

ADD

Output interfaces: (output to laser engraver)



(1) Make a Fixed point: Move the square to move the laser head to the right position.

(2) The button, parameter explaining:

Output: Output to the engraving machine;

Again: Output last work and engraving again;

Stop: Because engraving machine have buffer memory, so click this button just stop to output, but the engraving machine does not stop immediately;

Fixed position: Click this button to draw a rectangle working area for test;

Save Position: Save the laser head start position;

Read Position: Read the coordinate that has been already saved.

Exit: Return to the composing interface, does not influence engraving output process;

Convex/Cave: Two kinds of mode of the seal, choose the mode needed;

Versa/Normal: Versa or Normal word after output;

Speed: Engrave speed;

Partition: Under the same situation, when the partition level higher, engrave speed higher, but lower in precision;

Outline: Use for Vector cutting;

Data Exceller: Deleted the unnecessary part, and improve the efficiency of output;

Slope: When engrave small lines, avoid the lines "upper thin lower thick" ;

X Position: Laser Head X axis position;

Y Position: Laser Head Y axis position;

Step: Adjust laser head step distance(mm).

Make a Start point to export

Before carrying on this step, please confirm the engraving machine is connected with computer and in working state.

1. Set the starting point

(1)After composing the good layout, choose “output” in the menu;

(2)Click and enter the engraving outputs window, the output position was last time outputs used before;

(3)Click “ReadPosition” that read the start point has been already stored.

(3)Set the starting point manually; pull the icons to the corresponding position with the mouse, or regulate X axis, Y axis, regulate the precision of control with the step distance;

(5)Press the test button on the panel of the engraving machine to check the present position, do corresponding adjustment if need;

(6)Position preview; Click the FixPosition icons, the engraver will draw one rectangle outside layout, check the size and position of the output area.

Output

Click the icon Output to export the data to engraving machine.

(1)The engraving machine arrives in direct output: Use this output attached of system to control and send the data to the engraving machine;

(2)Use WINDOWS to export: Use WINDOWS printer driver to send the data to the engraving machine,

Operation method: Add a stylus printer in WINDOWS printer (Recommend NEC 2200) ,It is LPT1 to set up and export ports; In the following interface, set up the way of outputting: Use WINDOWS to export;

(3)Output PLT file: Establishment, store the seal data already changed in designatedly in order to support the engraving machine in compatibility. In PLT file;

(4)Use DOS to export: Under special circumstances export in order to solve abnormally, it is for more extensive support and establishing to the engraving machine of the security system too; Using this, engraving will open a MS-DOS window while exporting, export and finish closing automatically;

2、Orient the way:

(1)Upper left corner: Regard upper left corner of the seal as the basic point of the localization, make a reservation / engrave and export;

(2)Lower left corner: Regard lower left corner of the seal as the basic point of the localization, make a reservation / engrave and export;

(3)Upper right corner: Regard upper right corner of the seal as the basic point of the localization, make a reservation / engrave and export;

(4)Lower right corner: Regard lower right corner of the seal as the basic point of the localization, make a reservation / engrave and export;

(5)Coordinate: While exporting, orient coordinates and is participated in calculating;

3、 Output the rank: Improve and engrave the quality of outputting, only used in "the engraving machine arrives in direct output" Way; It is revised that it is not essential if it is normal to export;
(only use when the engraving machine laser head shakes) ;

4、 The button is explanation:

(1)Engrave and export: Click after establishing the parameter of outputting, change the data and export to the engraving machine;

(2)Initialize the engraving machine: Set up the inside parameter of the engraving machine again (To that some engraving machine is invalid) ;

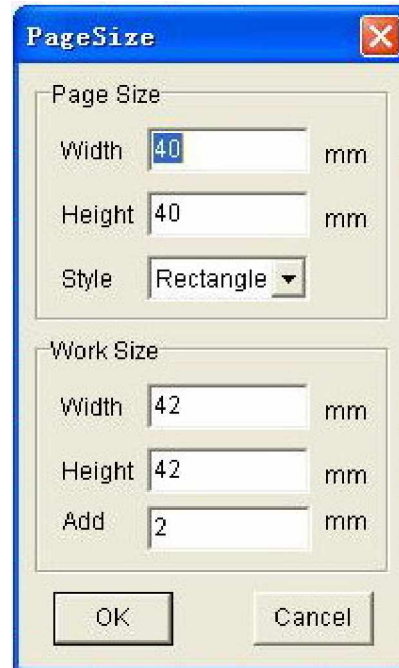
(3)Cancel: Give up engraving and exporting, withdraw from this interface.

Scan the area

Page size: Generally use only in the type of the self-defining layout; Other types, please double click the layout spring and set up the window to adjust the size;

Type: It will influence and scan the type of the area while exporting;

Work size: Acquiescence is greater by 2 mm.

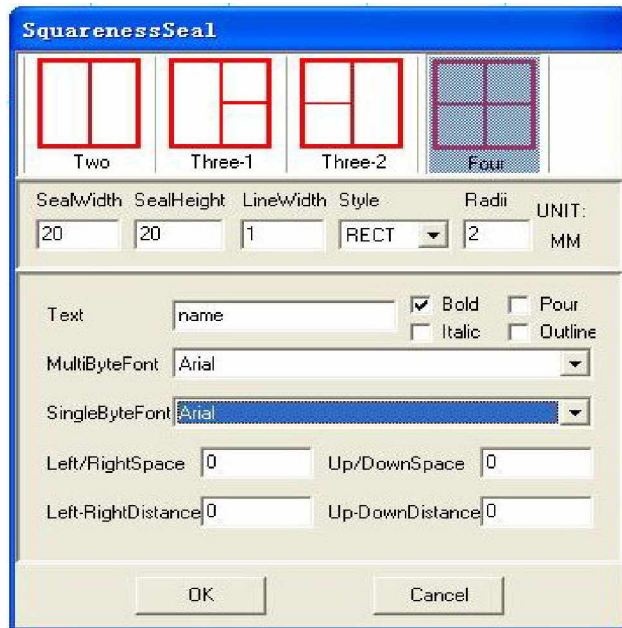


Seal composing

Square seal composing

Step:

- (1) Choose to newly build in the menu - The square seal springs the window below;
- (2) Choose the type of the seal: seal of two words, the seal of three words, seal of four words;
- (3) After setting up the parameter, fix;
- (4) Set up the scan area, needn't generally change, confirm directly;
- (5) The single character adjusting: Choose the editor in the menu - Show that chooses the frame, finelies tune tools, click the characters / the rectangle above the rectangle with the mouse - -Choose this target; Adjust in finelying tune tools;



**(6)The whole seal adjusting:
Double click seal, spring below
window, carry on parameter
change; The single character in
the past was adjusted and lost
efficiency; Fix;**

**(7)Do not fulfil requirements,
repeat the above to operate.**

A seal composing

Step:

(1)Choose among menu, newly-built - spring the window following by pairs of seal;

(2)Choose the type: Do singly and more, arrange more;

(3)Set up the parameter: Walk / arrange in how is number value competent / arrange one more seal can spend;

(4)Input the content of the characters: As to walking / arranging one more seal more, each lines of characters are input respectively, and the script and design are established respectively;

(5)It is arrange automatically not to choose, not and not the competent according to pieces of sizes of seal /arrange not to count is even to arranging, the

size of the word is set up automatically; Otherwise please manual to set up characters wide high; Fix;

(6)Set up the scan area, needn't generally revise, confirm directly;

(7)The single character adjusting: Choose the editor in the menu - Show that chooses the frame, finelies tune tools, click the characters / the rectangle above the rectangle with the mouse - -Choose this target; Adjust in finelying tune tools;

(8)The whole seal adjusting: Double click seal, spring below window, carry on parameter change; The single character in the past was adjusted and lost efficiency; Fix;

(9)Do not fulfil requirements, repeat the above to operate.

Round seal composing

Step:

(1)Choose in the menu: Newly-built - The round seal springs the window below;

(2)Choose the type of the round seal, amounts to five kinds;

(3)Set up the parameter:

The line outside is wide: Zhang BianKuan;

The interior sideline is wide: It is wide by the interior seal;

Sideline distance: Distance between characters and Zhang Bian;

Contained angle: Angle that the characters are distributed;

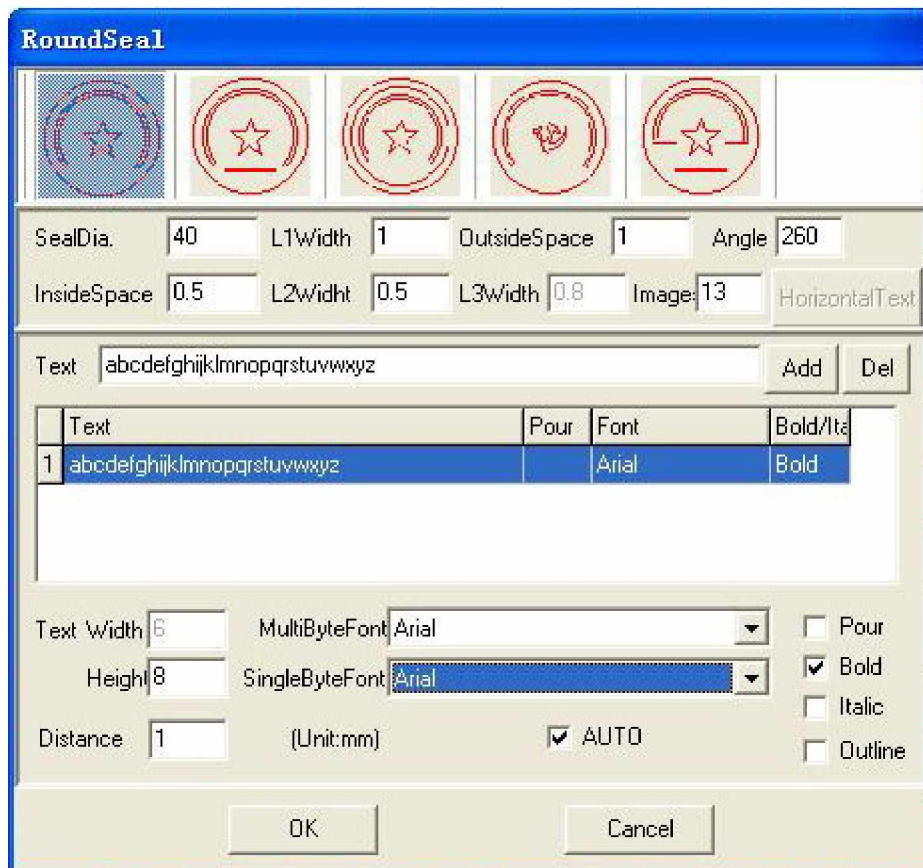
Add, delete: Divide the characters into several sections to set up the script and design separately;

(4)Revise the content of the characters, click the characters revised, then in " content of the characters " And then revise;

(5)Choose to arrange automatically, according to the size and inserting the angle to count and arrange evenly of the round seal, the width of the word is set up automatically; Otherwise, the ones that asked to set up the characters manually are wide; Fix;

(6)Set up the scan area, needn't generally revise, confirm directly;

(7)The single character adjusting: Choose the editor in the menu - Show that chooses the frame, finelies tune tools, click the characters / the rectangle above the rectangle with the mouse - -Choose this target; Adjust in finelying tune tools;



(8)The whole seal adjusting: Double click seal, spring below window, carry on parameter change; The single character in the past was adjusted and lost efficiency; Fix;

(9)Do not fulfil requirements, repeat the above to operate.

Oval seal composing

Step:

(1)Choose to newly build in the menu - The oval seal springs the window below;

(2)Choose the type of the oval seal, amounts to three kinds;

(3)Set up the parameter:

Cross axle, axis of ordinates: The oval seal one is harsh and unreasonable and wide and setting upright long;

The line outside is wide: Zhang BianKuan;

The interior sideline is wide: It is wide by the interior seal;

Sideline distance: Distance between characters and Zhang Bian;

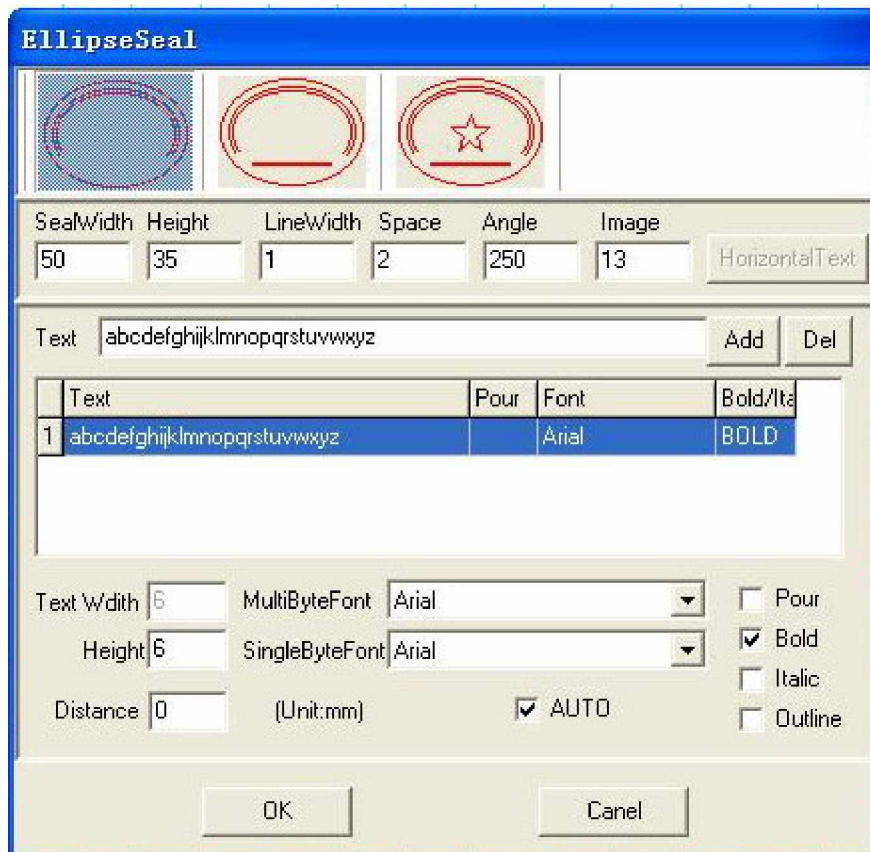
Contained angle: Angle that the characters are distributed;

Add, delete: Divide the characters into several sections to set up the script and design separately;

(4)Revise the content of the characters, click the characters revised, then in " content of the characters " And then revise;

(5)Choose to arrange automatically, according to the size and inserting the angle to count and arrange evenly of the oval seal, the width of the word is set up automatically; Otherwise, the ones that asked to set up the characters manually are wide; Fix;

(6)Set up the scan area, needn't generally revise, confirm directly;



(7)The single character adjusting: Choose the editor in the menu - Show that chooses the frame, finelies tune tools, click the characters / the rectangle above the rectangle with the mouse - -Choose this target; Adjust in finelying tune tools;

The whole seal adjusting: Double click seal, spring below window, carry on parameter change; The single character in the past was adjusted and lost efficiency; Fix;

Do not fulfil requirements, repeat the above to operate.

Self-defining (Blank Layout) Composing

Set up a blank layout in self-defining type, add characters, figure, picture reach layout, regulate each target size and position, make it reach result of predict; In fact, the layout of the same type, only need compos once , it preserves to be. In YZ file, while using again, accesses and revises.